

Point-to-point configuration instructions for VONETS products

VONETS products encountered the following point-to-point application cases during use, as shown in Figure 1. You can refer to the instruction document for configuration:

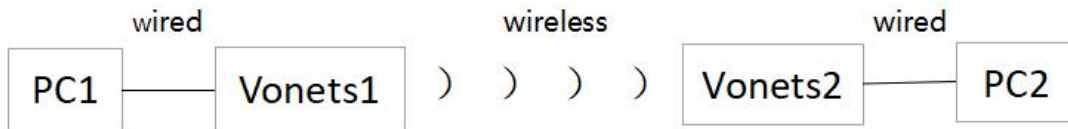


Figure 1

Take the single-frequency 2.4G VONETS product as an example, with Vonets1 as a hot spot and Vonets2 as a bridge (both are in bridge mode):

Vonets1 configuration steps: (step 2 and step 3 can be omitted)

Step 1: In the "LAN port settings", configure the bridge with a static IP: 192.168.254.100, subnet mask: 255.255.255.0, disable the "DHCP service", click "Apply", as shown in Figure 2:

Local IP	
Local IP Connection Type	
Connection Type	STATIC (fixed IP)
Static Mode	
IP Address	192.168.254.100
Subnet Mask	255.255.255.0
Default Gateway	
Primary DNS Server	
Secondary DNS Server	
DHCP Server	
DHCP Server	Disable
Apply Cancel	

Figure 2

Step 2: In the "WiFi Repeater", you can change the name of the Vonets1 hotspot (the default is the last four digits of the VONETS_2.4G_MAC address), and select the appropriate transmit power, and then click "Apply" as shown in Figure 3:

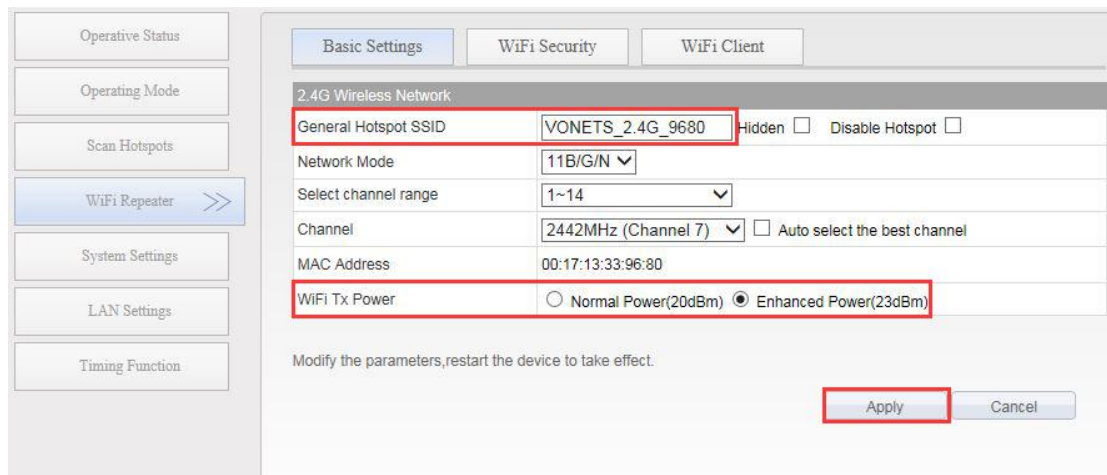


Figure 3

Step 3: In the "WiFi Repeater", you can change the password of the Vonets1 hotspot (the default is 12345678), and then click "Apply", as shown in Figure 4:

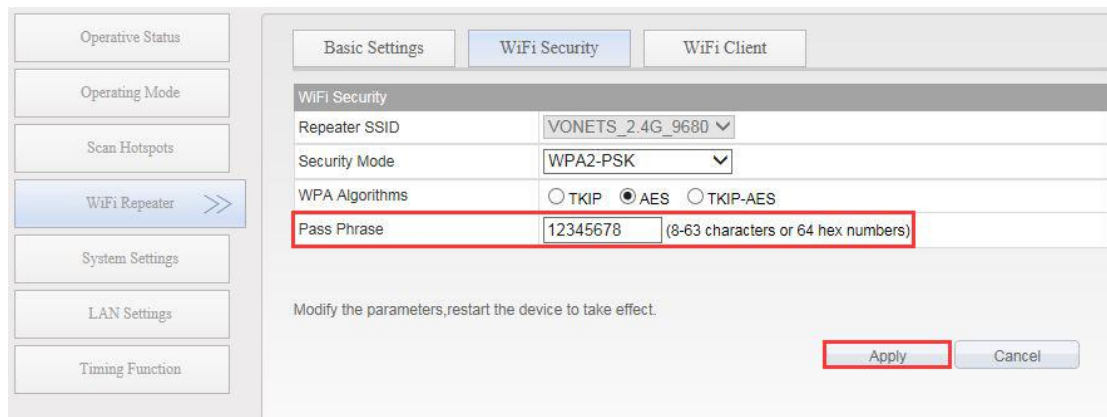


Figure 4

Step 4: Finally, select "Reboot" in "System Settings" (then turn off the configuration webpage and go to the next step), as shown in Figure 5:

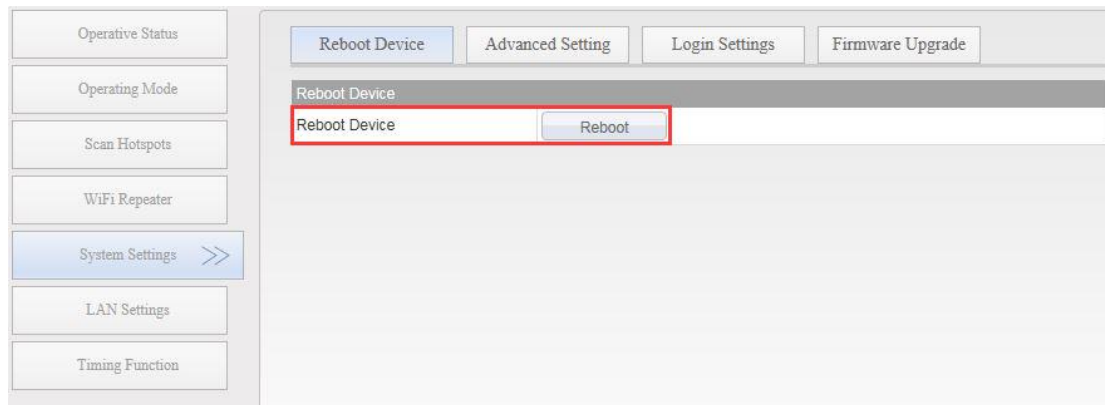


Figure 5

Step 5: Wait for the **wifi light of Vonets1 to flash quickly**, indicating that **the configuration is successful!**

Vonets2 configuration steps: (step 2 can be omitted)

Step 1: Configure the bridge with a static IP: 192.168.254.101 and subnet mask: 255.255.255.0 in the "LAN settings", disable the "DHCP service" and click "Apply", as shown in Figure 6:

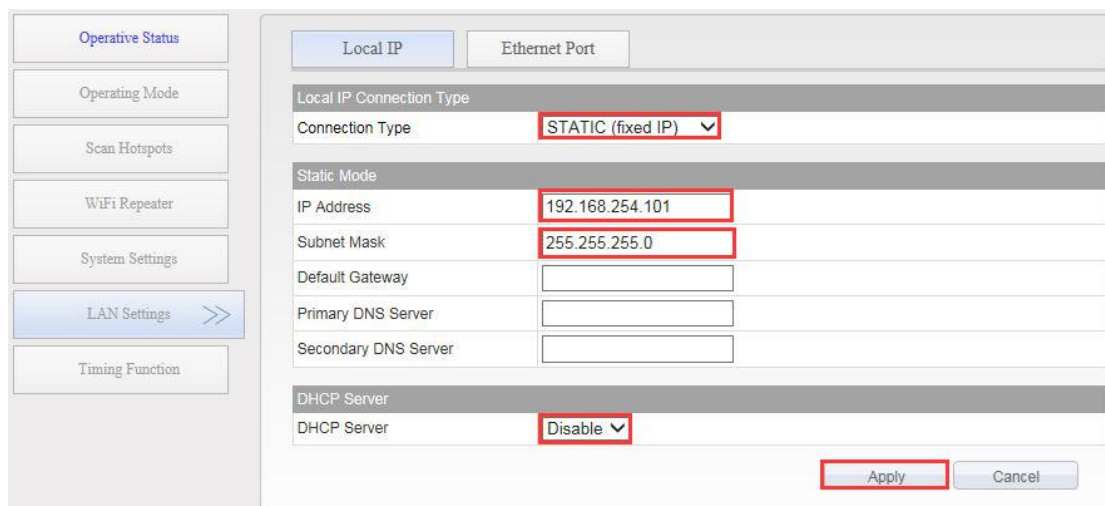


Figure 6

Step 2: In the "WiFi Repeater", you can select the appropriate transmit power, and then click "Apply" as shown in Figure 7:

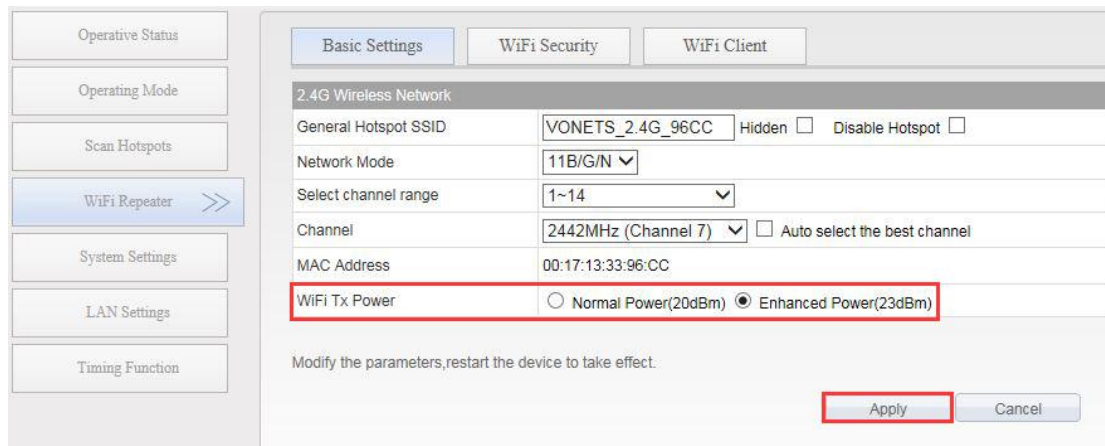


Figure 7

Step 3: Search and select the hotspot name of Vonets1 in "Scan Hotspots", and then click "Next", as shown in Figure 8:

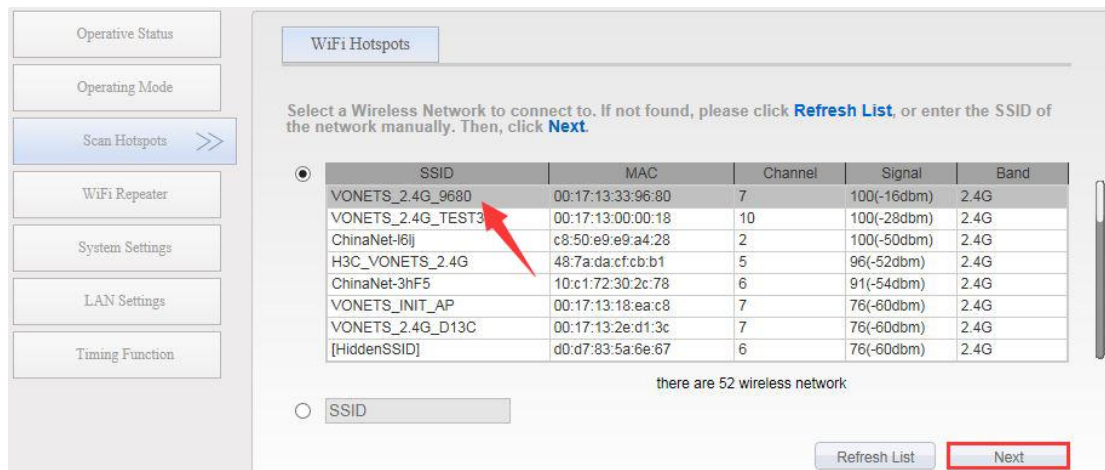


Figure 8

Step 4: Enter the hotspot password of Vonets1, select "Disable Hotspot" for the repeater hotspot below (not let Vonets2 send out hotspots), click "Apply", and then click "Reboot" (then close the configuration webpage and go to the next step), the configuration interface As shown in Figure 9, Figure10:

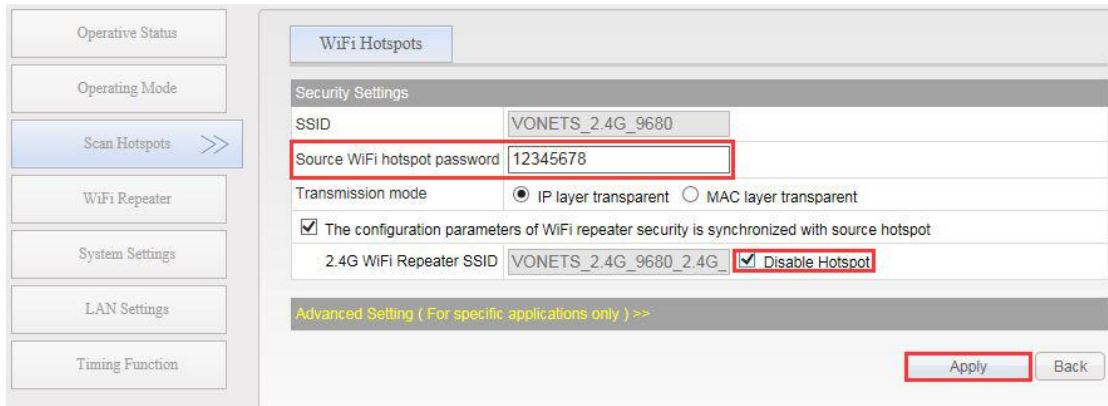


Figure 9

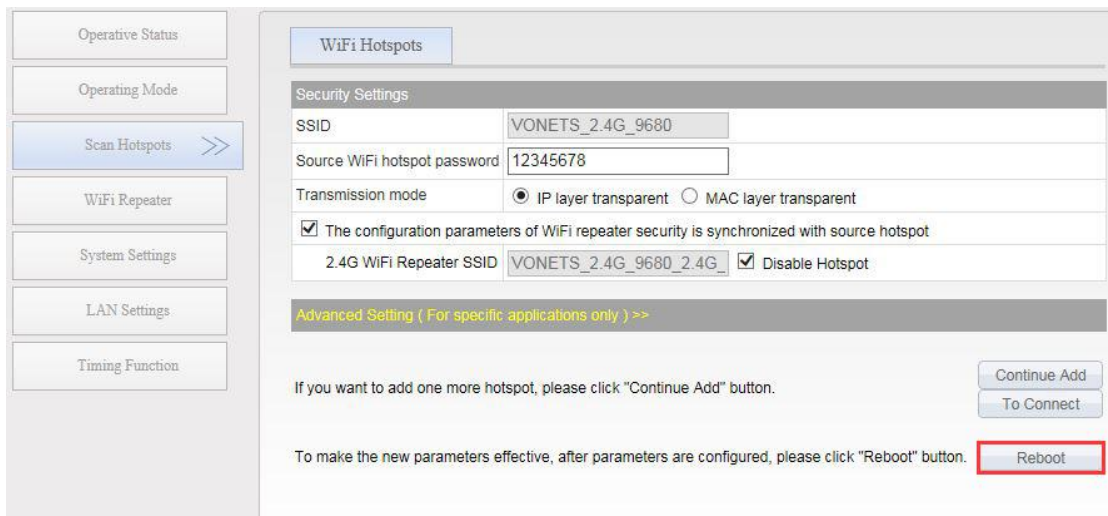


Figure 10

Step 5: Wait for the wifi light of Vonets2 to flash quickly, which means that the hotspot of Vonets1 is successfully connected, and the configuration is successful!

(Note: The easiest way is to make all the four in one network segment! If you have special needs, you can configure Vonets1 and Vonets2 with static IPs on the same network segment, and PC1 and PC2 as static IPs on another network segment)